



License No. 800025015  
FL License # CMTL-0003  
CLIA No. 10D1094068

## Certificate of Analysis

Compliance Test

Batch # D8 CBG Flower Pueblo  
Batch Date: 2021-07-06  
Extracted From: Hemp

Test Reg State: Oregon

Production Facility: High Plains  
Production Date: 2021-06-30

Order # QAL210708-130060  
Order Date: 2021-07-08  
Sample # AABP473

Sampling Date: 2021-07-12  
Lab Batch Date: 2021-07-12  
Completion Date: 2021-07-20

Initial Gross Weight: 21.869 g



### Heavy Metals

Specimen Weight: 245.000 mg

**Passed**  
(ICP-MS)

Dilution Factor: 2.000

Analyte	LOQ (ppb)	Action Level (ppb)	Result (ppb)	Analyte	LOQ (ppb)	Action Level (ppb)	Result (ppb)
Arsenic (As)	100	1500	<LOQ	Cadmium (Cd)	100	500	<LOQ
Lead (Pb)	100	500	<LOQ	Mercury (Hg)	100	3000	<LOQ



### Mycotoxins

Specimen Weight: 186.100 mg

**Passed**  
(LCMS)

Dilution Factor: 8.060

Analyte	LOQ (ppb)	Action Level (ppb)	Result (ppb)	Analyte	LOQ (ppb)	Action Level (ppb)	Result (ppb)
Aflatoxin B1	6	20	<LOQ	Aflatoxin B2	6	20	<LOQ
Aflatoxin G1	6	20	<LOQ	Aflatoxin G2	6	20	<LOQ
Ochratoxin A	12	20	<LOQ				

*Xueli Gao*  
Xueli Gao  
Ph.D., DABT  
Lab Toxicologist

*Aixia Sun*  
Aixia Sun  
D.H.Sc., M.Sc., B.Sc., MT (AAB)  
Lab Director/Principal Scientist



Definitions and Abbreviations used in this report: \*Total CBD = CBD + (CBD-A \* 0.877), \*Total THC = THCA-A \* 0.877 + Delta 9 THC, \*CBG Total = (CBGA \* 0.877) + CBG, \*CBN Total = (CBNA \* 0.877) + CBN, \*Other Cannabinoids Total = CBC + CBDV + THCv + THCV-A, \*Total Detected Cannabinoids = CBD Total + CBG Total + CBN Total + THC Total + CBC + CBDV + THCv + THCV-A, \*Analyte Details above show the Dry Weight Concentrations unless specified as 12% moisture concentration. (mg/ml) = Milligrams per Milliliter, LOQ = Limit of Quantitation, LOD = Limit of Detection, Dilution = Dilution Factor (ppb) = Parts per Billion, (%) = Percent, (cfu/g) = Colony Forming Unit per Gram (cfu/g) = Colony Forming Unit per Gram, LOD = Limit of Detection, (µg/g) = Microgram per Gram (ppm) = Parts per Million, (ppm) = (µg/g), (aw) = aw (area ratio) = Area Ratio, (mg/Kg) = Milligram per Kilogram, \*Measurement of Uncertainty = +/- 5%

This report shall not be reproduced, without written approval, from ACS Laboratory. The results of this report relate only to the material or product analyzed. Test results are confidential unless explicitly waived otherwise. Accredited by a third-party accrediting body as a competent testing laboratory pursuant to ISO/IEC 17025 of the International Organization for Standardization.



License No. 800025015  
FL License # CMTL-0003  
CLIA No. 10D1094068

## Certificate of Analysis

### Compliance Test

Batch # D8 CBG Flower Pueblo  
Batch Date: 2021-07-06  
Extracted From: Hemp

Test Reg State: Oregon

Production Facility: High Plains  
Production Date: 2021-06-30

Order # QAL210708-130060  
Order Date: 2021-07-08  
Sample # AABP473

Sampling Date: 2021-07-12  
Lab Batch Date: 2021-07-12  
Completion Date: 2021-07-20

Initial Gross Weight: 21.869 g



### Pesticides

Specimen Weight: 186.100 mg

**Passed**  
(LCMS/GCMS)

Dilution Factor: 8.060

Analyte	LOQ (ppb)	Action Level (ppb)	Result (ppb)	Analyte	LOQ (ppb)	Action Level (ppb)	Result (ppb)
Abarbectin	28.23	300	<LOQ	Acephate	30	3000	<LOQ
Acequinocyl	48	2000	<LOQ	Acetamiprid	30	3000	<LOQ
Aldicarb	30	100	<LOQ	Azoxystrobin	10	3000	<LOQ
Bifenazate	30	3000	<LOQ	Bifenthrin	30	500	<LOQ
Carbaryl	10	500	<LOQ	Chlorfenapyr	48	100	<LOQ
Chlorpyrifos	30	100	<LOQ	Clofentazine	30	500	<LOQ
Coumaphos	30	100	<LOQ	Cyfluthrin	30	1000	<LOQ
Cypermethrin	30	1000	<LOQ	Daminozide	30	100	<LOQ
Diazinon	30	200	<LOQ	Dichlorvos	30	100	<LOQ
Dimethoate	30	100	<LOQ	Dimethomorph	30	3000	<LOQ
Ethoprophos	30	100	<LOQ	Etofenprox	30	100	<LOQ
Etoxazole	30	1500	<LOQ	Fenhexamid	30	3000	<LOQ
Fenoxycarb	30	100	<LOQ	Fenpyroximate	30	2000	<LOQ
Fipronil	30	100	<LOQ	Fonicamid	30	2000	<LOQ
Fludioxonil	30	3000	<LOQ	Hexythiazox	30	2000	<LOQ
Imazalil	30	100	<LOQ	Imidacloprid	30	3000	<LOQ
Kresoxim Methyl	30	1000	<LOQ	Malathion	30	2000	<LOQ
Metalaxyl	10	3000	<LOQ	Methiocarb	30	100	<LOQ
Methomyl	30	100	<LOQ	Mevinphos	30	100	<LOQ
Myclobutanil	30	3000	<LOQ	Naled	30	500	<LOQ
Oxamyl	30	500	<LOQ	Pacloutrazol	30	100	<LOQ
Parathion-methyl	48	100	<LOQ	Pentachloronitrobenzene	30	200	<LOQ
Permethrin	30	1000	<LOQ	Phosmet	30	200	<LOQ
Piperonylbutoxide	30	3000	<LOQ	Prallethrin	30	400	<LOQ
Propiconazole	30	1000	<LOQ	Propoxur	30	100	<LOQ
Pyrethrins	30	1000	<LOQ	Pyridaben	30	3000	<LOQ
Spinetoram	30	3000	<LOQ	Spiromesifen	30	3000	<LOQ
Spirotetramat	30	3000	<LOQ	Spiroxamine	30	100	<LOQ
Tebuconazole	30	1000	<LOQ	Thiacloprid	30	100	<LOQ
Thiamethoxam	30	1000	<LOQ	Trifloxystrobin	30	3000	<LOQ

*Xueli Gao*  
Xueli Gao Lab Toxicologist  
Ph.D., DABT

*Aixia Sun*  
Aixia Sun Lab Director/Principal Scientist  
D.H.Sc., M.Sc., B.Sc., MT (AAB)



Definitions and Abbreviations used in this report: \*Total CBD = CBD + (CBD-A \* 0.877), \*Total THC = THCA-A \* 0.877 + Delta 9 THC, \*CBG Total = (CBGA \* 0.877) + CBG, \*CBN Total = (CBNA \* 0.877) + CBN, \*Other Cannabinoids Total = CBC + CBDV + THCV + THCV-A, \*Total Detected Cannabinoids = CBD Total + CBG Total + CBN Total + THC Total + CBC + CBDV + THCV + THCV-A, \*Analyte Details above show the Dry Weight Concentrations unless specified as 12% moisture concentration. (mg/ml) = Milligrams per Milliliter, LOQ = Limit of Quantitation, LOD = Limit of Detection, Dilution = Dilution Factor (ppb) = Parts per Billion, (%) = Percent, (cfu/g) = Colony Forming Unit per Gram (cfu/g) = Colony Forming Unit per Gram, LOD = Limit of Detection, (µg/g) = Microgram per Gram (ppm) = Parts per Million, (ppm) = (µg/g), (aw) = aw (area ratio) = Area Ratio, (mg/Kg) = Milligram per Kilogram, \*Measurement of Uncertainty = +/- 5%

This report shall not be reproduced, without written approval, from ACS Laboratory. The results of this report relate only to the material or product analyzed. Test results are confidential unless explicitly waived otherwise. Accredited by a third-party accrediting body as a competent testing laboratory pursuant to ISO/IEC 17025 of the International Organization for Standardization.



Lifted Made

Sample 226-032822-323

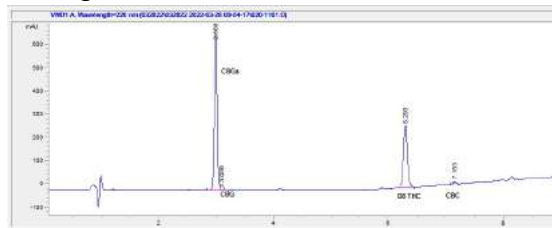
Urb: Watermelon Zkittles

Sample Submitted: 03-28-2022; Report Date: 03-29-2022

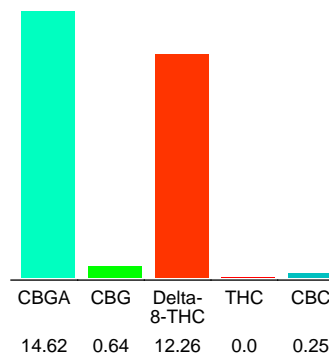
## Urb: Watermelon Zkittles

Plant Material: Flower

### Chromatogram



### Cannabinoid Profile



### Cannabinoid Profile by HPLC

**0.00%**  
Calculated THC Yield

**0.00%**  
Calculated CBD Yield

**27.77%**  
Total Cannabinoids

Cannabinoid	% wt	mg/g
CBGA	14.62	146.2
CBG	0.64	6.4
Delta-8-THC	12.26	122.6
THC	0.0	0.0
CBC	0.25	2.5
<b>Total Cannabinoids</b>	<b>27.77</b>	<b>277.7</b>
<b>Calculated THC Yield</b>	<b>0.00</b>	<b>0.00</b>
<b>Calculated CBD Yield</b>	<b>0.00</b>	<b>0.00</b>

Calculated Maximum THC Yield = THC + 0.877 \* THCA  
 Calculated Maximum CBD Yield = CBD + 0.877 \* CBDA

**Marin Analytics, LLC**

250 Bel Marin Keys Blvd, Suite D4  
Novato, CA 94949

415-936-6477 / sarabiancalana1@gmail.com

**Sara Biancalana**  
Chief Scientist

This sample has been tested by Marin Analytics, LLC using valid testing methodologies and a quality system. Values reported relate only to the sample tested. Marin Analytics, LLC makes no claims as to the efficacy, safety or other risks associated with any detected or non-detected levels of any compounds reported herein. This Certificate shall not be reproduced except in full, without the written approval of Marin Analytics, LLC.